



**EXPEDITION  
READY**

## SeaBat<sup>®</sup> 8160

### MULTIBEAM ECHO SOUNDER SYSTEM

The SeaBat 8160 provides an unbeatable combination of range, resolution & profitability, a first for a system of this frequency range.

The SeaBat 8160 transducer array is comprised of a linear receive and transmit array mounted together on a support base. The T-shaped array geometry provides the basis for a compact, high-resolution sonar which is easily installed for portable or hull mounts - a first for a high-resolution system in this frequency range.

The system features a pitch-stabilized transmitter and an active roll compensated receiver.

The SeaBat 8160 processor is compatible with other SeaBat sonar heads. It can be updated in minutes to accommodate future requirements and features a user-friendly point-and-click interface.

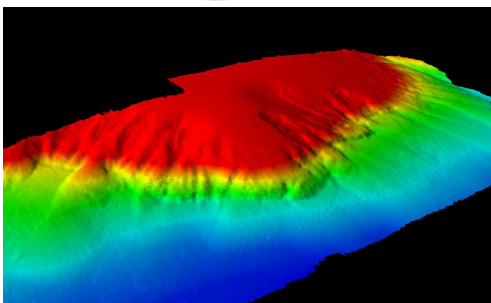
### PRODUCT LOGBOOK



FREQUENCY	50kHz (nominal)
SWATH	Swath coverage greater than 4 x water depth
DEPTH	Operational depths 10m to 3000m
BEAMS	126 beams
FLEXIBLE	Hull-mount or portable
UPGRADE	Sidescan upgradable

## SEABAT 8160 SYSTEM SPECIFICATIONS

FREQUENCY	50kHz (nominal)
DEPTH RESOLUTION	1.4 / 2.9 / 8.6cm (range dependent)
SWATH COVERAGE	Greater than 4x water depth
MAX OPERATIONAL DEPTH	3000m
NUMBER OF BEAMS	126
ALONG-TRACK BEAMWIDTH	1.5°, 3.0°, 4.5°, 6.0° (selectable)
ACROSS-TRACK BEAMWIDTH	1.5° at nadir (nominal)
PITCH STABILIZATION	±10°
MAX UPDATE RATE	15
TRANSDUCER DEPTH RATING	100m
SYSTEM SUPPLY	115V/230V 50/60 Hz,350W
VIDEO DISPLAY	SVGA, 800 x 600, 72Hz
SYSTEM CONTROL	Trackball or from Ethernet
DATA OUTPUT	10MB Ethernet or serial RS232C
DATA UPLINK	High-speed digital coax with fiber-optic option
TEMPERATURE: OPERATING, STORAGE	0° to +40°C, storage: -30° to +55°C
TRANSDUCER ARRAY DIMENSION	1474mm x 1100mm x 90mm
DIMENSION TRANSCIEVER ARRAY	265mm x 483mm x 492mm
WEIGHT HYDROPHONE	42kg (air) / 17.5kg (water) including 15m cable
WEIGHT TRANSMITTER	37kg (air) / 18.5kg (water) including 15m cable



### WHY CHOOSE A SEABAT 8160?

- High-resolution sonar which is easily installed for portable or hull mounts
- The processor is compatible with other SeaBat sonar heads
- Services and Support Agreement (SSA)

For more details visit [www.reson.com](http://www.reson.com) or contact your local RESON Office. RESON reserves the right to change specifications without notice. 2010©RESON

RESON A/S  
Denmark  
Tel: +45 4738 0022  
[reson@reson.com](mailto:reson@reson.com)

RESON Inc.  
U.S.A.  
Tel: +1 805 964-6260  
[sales@reson.com](mailto:sales@reson.com)

RESON OFFSHORE Ltd.  
Scotland U.K.  
Tel: +44 1224 709 900  
[sales@reson.co.uk](mailto:sales@reson.co.uk)

RESON GmbH  
Germany  
Tel: +49 (0) 431 720 7180  
[reson@reson-gmbh.de](mailto:reson@reson-gmbh.de)

RESON B.V.  
The Netherlands  
Tel: +31 (0) 10 245 1500  
[info@reson.nl](mailto:info@reson.nl)

RESON Pte. Ltd.  
Singapore  
Tel: +65 6725 9851  
[singapore@reson.com](mailto:singapore@reson.com)