



NaviSound 600RT Series

Remote Operated Hydrographic Singlebeam Echosounder



NaviSound 600RT

- High ping rate, up to 20Hz
- High performance. Resolution 1cm
- Frequency range from 15 – 600kHz
- Up to four independent frequencies in simultaneous operation mode
- Support depths up to 1200m
- Printing on standard Windows Printer
- Interface for Heave, AUX (DGPS) and Repeater output
- Sound Velocity Profile compensation

RESON's NaviSound 600RT Series is a new range of Advanced Hydrographic Survey Echosounders designed to meet the needs of Hydrographic and surveyors working on small, medium to large survey vessels.

Best choice for surveying in shallow water, harbors, waterways, off-shore and for dredging applications.

Supports dual, triple or quad channel sounding operation. Convenient four-channel mini Multi Channel System (MCS). Continuous internal data storage with playback capability, and unique RESON developed tamper resistant data set encryption, - offering a verifiable back-up alternative to paper recorder.

NaviSound 600RT Series provide reliable depth measurement and convenient, easy-to-operate capabilities. Dedicated for connection to a standard PC system. NaviSound 600RT Series is delivered with NaviSound Control Centre software (NCC).

Individual NaviSound 600RT models are as follows:

- NS 620RT: Standard Hydrographic EchoSounder supports dual channel simultaneous operation
- NS 630RT: Enhanced Hydrographic EchoSounder supports triple channel simultaneous operation
- NS 640RT: Improved Hydrographic EchoSounder supports quad channel simultaneous operation

OPTIONS

- External 115/230 VAC converter and AC cable
- RS-232C cable (Extended Distance Data Cable) EDDC
- Non-standard filter kits between 15-600 kHz
- 19" Rack mount kit
- Transport case





NaviSound 600RT Series

Remote Operated Hydrographic Singlebeam Echosounder

SYSTEM PERFORMANCE

Output resolution:	1 cm
Measuring units:	Meters or Feet
Data logging & transfer:	Standard PC via RS-232C
Frequencies:	28-35 kHz and 190-225 kHz; optional 15-600 kHz
Transducer impedance:	100 Ohm
Gain control:	Manual or automatic
Pulse length:	Manual or automatic; 20µs to 4ms
Accuracy:	1 cm at 210 kHz; 7 cm at 33 kHz

INTERFACE

Supply voltage:	24VDC
Power consumption:	60 W
Transducer draft comp:	0 - 99.99; 0 - 300 ft
Man Sound Velocity:	1350 - 1600 m/sec in 1/m sec increment
Auto Sound Velocity profile:	1350 - 1600 m/sec in 1/m sec increment
Interface I/O:	4 x serial RS-232C for Com, Heave, GPS and Loop-Through
Additional features:	Bar-check program

MECHANICAL INTERFACE

Dimension; Weight 275x350x125 mm; 10.8x13.8x4.9 in (HxWxD); 5.5 kg; 12.1 lbs
 Temperature; Operating/ Storage 0° -45°C (32° -113°F)/ -10° - 70°C (14° - 158°F) Non-condensing

MODEL COMPARISON

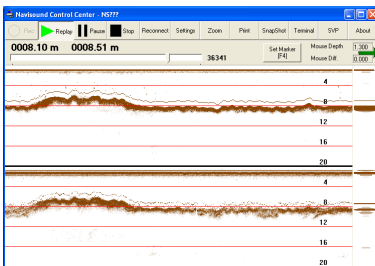
NaviSound	620RT	630RT	640RT
Max transmit power:	450W	450W	450W
Depth range:	0.2 - 1200m	0.2 - 1200m	0.2 - 1200m
Depth range:	0.7 - 4000ft	0.7 - 4000ft	0.7 - 4000ft
Channels/ Transducers:	2/2	3/3	4/4
Max Ping Rate (PRF) Hz:	20	20	20

SCOPE OF DELIVERY	NS620RT	NS630RT	NS640RT
Transceiver Units:	1	2	2
NCC software program (CD):	1	1	1
User's Manual:	1	1	1
DC Power Cable, 2m:	1	2	2
RS-232C Data Cable for PC, 4m:	1	1	1
Interconnection Cable, 2m:	-	1	1
Transducer Connectors:	2	3	4
Fuses:	1	2	2

SYSTEM REQUIREMENTS

- Operating System: MS Windows XP
 MS Internet Explorer 6.0 or higher (no beta version or release candidates are supported)
 Desktop systems - Minimal requirements:
- CPU: 1.6 GHz
 - Internal memory: 512 Mb internal memory
 - Hard disk: 40 Gb
 - CD writer
 - Multi serial I/O (USB ports not supported)

RESON reserves the right to change specifications without notice. © 2006 RESON A/S
 For Acoustical Measurement Accuracy please refer to www.reson.com or contact sales.



RESON A/S
 Denmark
 Tel: +45 4738 0022
 E-mail: reson@reson.dk

RESON GmbH
 Germany
 Tel: +49 431 720 7180
 E-mail: reson@reson-gmbh.de

RESON Inc.
 USA
 Tel: +1 805 964-6260
 E-mail: sales@reson.com

RESON B.V.
 The Netherlands
 Tel: +31 (0)10 245 1500
 E-mail: info@reson.nl

RESON Offshore Ltd.
 United Kingdom
 Tel: +44 1224 709 900
 E-mail: sales@reson.co.uk

RESON Mediterranean SRL
 Italy
 Tel: +39-051-572-643
 E-mail: info@reson.it